



SEA-BIRD
SCIENTIFIC

SBE41-CP ALACE

Instrument Configuration

Instrument Serial Number: 41-10500
Instrument Firmware Version: V 7.2.5
Zero Conductivity Frequency: 2680.94
Communications Format: RS232
Communications Settings: 9600 baud, 8 Data Bits, No Parity

Installed Devices/Sensors

<i>Data Format</i>	<i>Measurement</i>	<i>Sensor Type</i>	<i>Serial Number</i>	<i>Rating</i>
Count	Temperature	Internal	N/A	N/A
Frequency	Conductivity	Internal	N/A	N/A
Count	Pressure	Druck	10818338	2000m(2000 dBar)



Sea-Bird Scientific
 13431 NE 20th Street
 Bellevue, WA 98005
 USA

+1 425-643-9866
 seabird@seabird.com
 www.seabird.com

SENSOR SERIAL NUMBER: 10500
 CALIBRATION DATE: 13-Jan-18

SBE 41 TEMPERATURE CALIBRATION DATA
 ITS-90 TEMPERATURE SCALE

COEFFICIENTS:

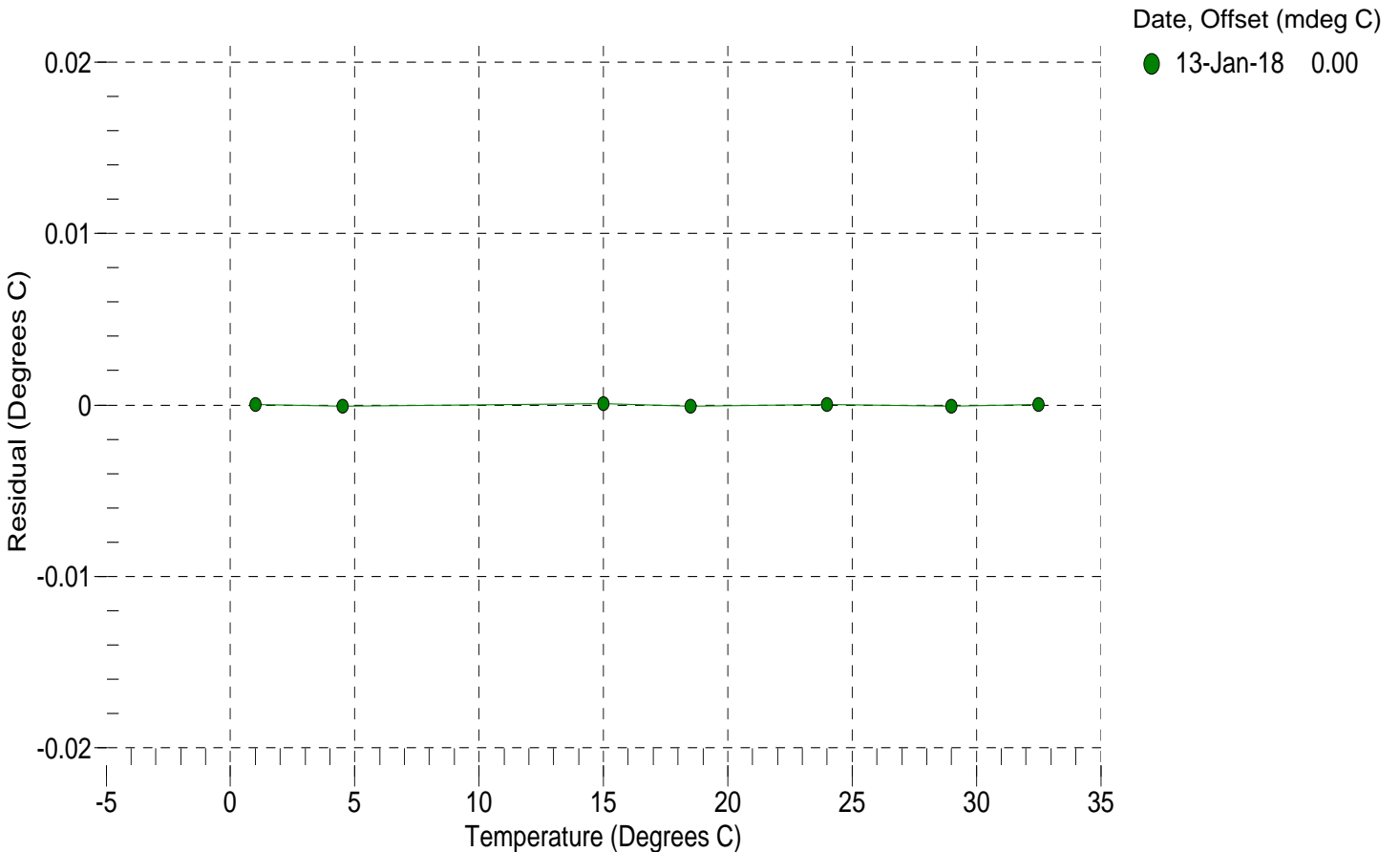
a0 = -8.789829e-004
 a1 = 3.011224e-004
 a2 = -4.198676e-006
 a3 = 1.621251e-007

BATH TEMP (° C)	INSTRUMENT OUTPUT (counts)	INST TEMP (° C)	RESIDUAL (° C)
1.0002	13363361.2	1.0002	0.0000
4.5000	11426872.6	4.4999	-0.0001
15.0000	7284084.3	15.0001	0.0001
18.5000	6307721.5	18.4999	-0.0001
23.9940	5061937.7	23.9940	0.0000
29.0000	4167496.3	28.9999	-0.0001
32.5000	3649763.0	32.5000	0.0000

n = Instrument Output (counts)

$$\text{Temperature ITS-90 (°C)} = 1 / \{ a_0 + a_1[\ln(n)] + a_2[\ln^2(n)] + a_3[\ln^3(n)] \} - 273.15$$

Residual (°C) = instrument temperature - bath temperature





Sea-Bird Scientific
 13431 NE 20th Street
 Bellevue, WA 98005
 USA

+1 425-643-9866
 seabird@seabird.com
 www.seabird.com

SENSOR SERIAL NUMBER: 10500
 CALIBRATION DATE: 13-Jan-18

SBE 41 CONDUCTIVITY CALIBRATION DATA
 PSS 1978: C(35,15,0) = 4.2914 Siemens/meter

COEFFICIENTS:

g = -9.922305e-001 CPcor = -9.5700e-008
 h = 1.386231e-001 CTcor = 3.2500e-006
 i = -3.300439e-004 WBOTC = -2.4863e-007
 j = 4.350403e-005

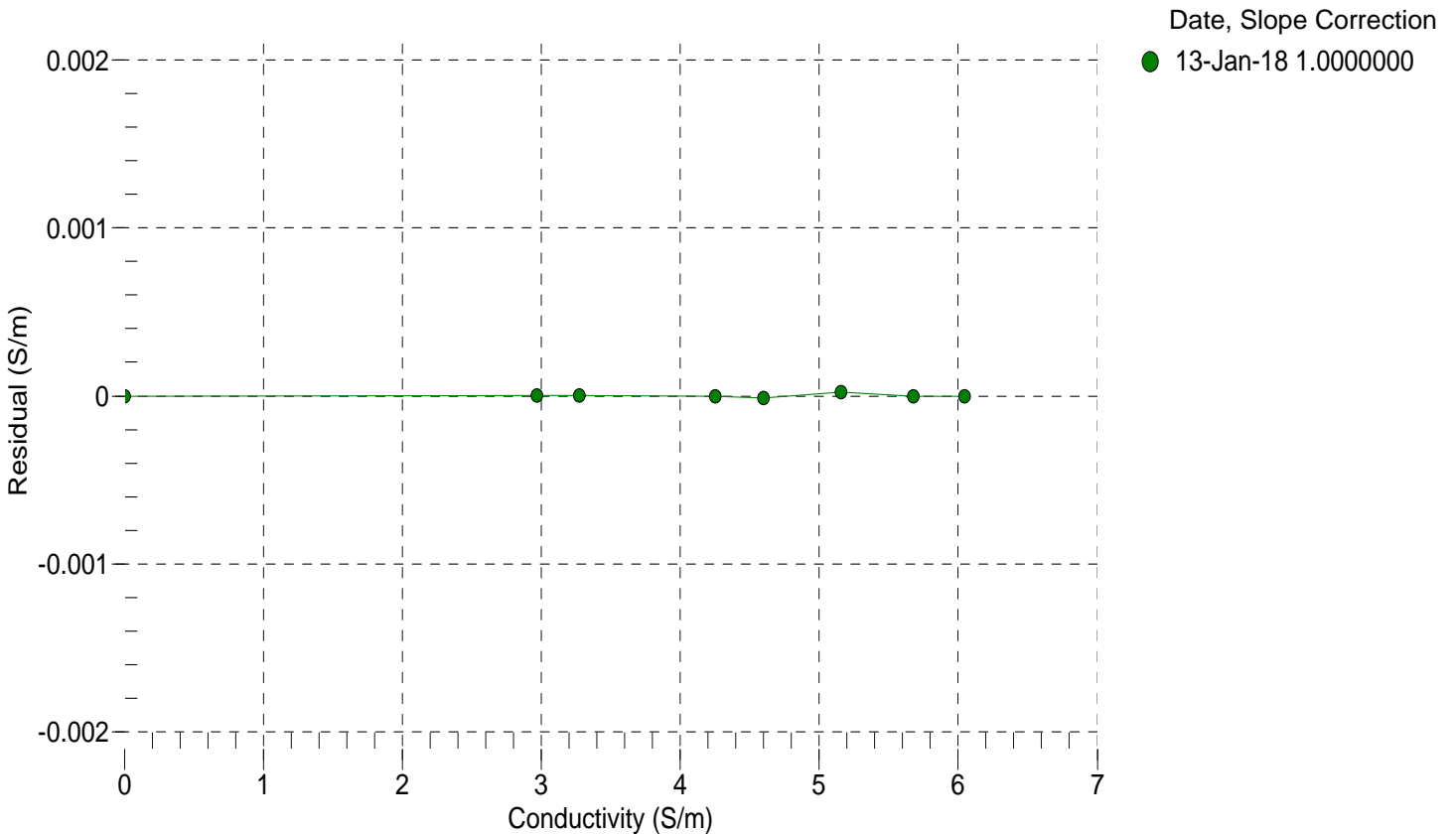
BATH TEMP (° C)	BATH SAL (PSU)	BATH COND (S/m)	INSTRUMENT OUTPUT (Hz)	INSTRUMENT COND (S/m)	RESIDUAL (S/m)
22.0000	0.0000	0.00000	2680.94	0.00000	0.00000
1.0002	34.7177	2.96836	5355.23	2.96836	0.00000
4.5000	34.6982	3.27468	5557.91	3.27468	0.00000
15.0000	34.6566	4.25409	6160.53	4.25409	-0.00000
18.5000	34.6478	4.59842	6358.54	4.59841	-0.00001
23.9940	34.6380	5.15441	6665.55	5.15443	0.00002
29.0000	34.6327	5.67562	6940.64	5.67562	-0.00000
32.5000	34.6295	6.04709	7130.02	6.04709	-0.00000

$$f = \text{Instrument Output(Hz)} * \text{sqrt}(1.0 + \text{WBOTC} * t) / 1000.0$$

t = temperature (°C); p = pressure (decibars); δ = CTcor; ϵ = CPcor;

$$\text{Conductivity (S/m)} = (g + h * f^2 + i * f^3 + j * f^4) / (1 + \delta * t + \epsilon * p)$$

Residual (Siemens/meter) = instrument conductivity - bath conductivity





Sea-Bird Scientific
 13431 NE 20th Street
 Bellevue, WA 98005
 USA

+1 425-643-9866
 seabird@seabird.com
 www.seabird.com

SENSOR SERIAL NUMBER: 10500
 CALIBRATION DATE: 10-Jan-18

SBE 41 PRESSURE CALIBRATION DATA
 2900 psia S/N 10818338

COEFFICIENTS:

PA0 =	2.443485e-001	PTCA0 =	-1.274783e+004
PA1 =	3.941189e-004	PTCA1 =	7.722351e+001
PA2 =	-2.840918e-013	PTCA2 =	-2.226800e+000
PTHA0 =	3.466597e+002	PTCB0 =	3.099388e+005
PTHA1 =	-6.314117e-005	PTCB1 =	-6.950720e+001
PTHA2 =	-1.659241e-012	PTCB2 =	2.044228e+000

PRESSURE SPAN CALIBRATION

THERMAL CORRECTION

PRESSURE (PSIA)	INSTRUMENT OUTPUT (counts)	THERMISTOR OUTPUT (counts)	COMPUTED PRESSURE (PSIA)	RESIDUAL (%FSR)	TEMP (°C)	THERMISTOR OUTPUT (counts)	INSTRUMENT OUTPUT (counts)
14.61	24330.3	4587087.2	14.64	0.00	32.50	4454186.00	25836.90
591.67	1487615.4	4585687.0	591.70	0.00	29.00	4499004.20	26089.20
1168.83	2954329.5	4584762.8	1168.89	0.00	23.99	4563039.00	26299.59
1746.01	4424217.7	4583813.8	1746.09	0.00	18.50	4633153.00	26353.29
2323.28	5897485.6	4582967.6	2323.38	0.00	15.00	4677775.60	26327.51
2900.46	7373354.7	4582258.0	2900.44	-0.00	4.50	4810631.40	26038.85
2323.34	5897227.6	4582514.8	2323.27	-0.00	1.00	4855083.40	25757.93
1746.00	4423980.6	4582731.6	1745.99	-0.00			
1169.14	2954576.0	4582942.6	1168.98	-0.01			
591.68	1487547.6	4583091.8	591.67	-0.00			
14.61	24199.7	4583152.0	14.59	-0.00			

TEMPERATURE (°C)	SPAN
2.03	309806.21
22.28	309404.96
32.68	309850.28

y = thermistor output (counts)

$$t = PTHA0 + PTHA1 * y + PTHA2 * y^2$$

$$x = \text{instrument output} - PTCA0 - PTCA1 * t - PTCA2 * t^2$$

$$n = x * PTCB0 / (PTCB0 + PTCB1 * t + PTCB2 * t^2)$$

$$\text{pressure (PSIA)} = PA0 + PA1 * n + PA2 * n^2$$

$$\text{Residual (\%FSR)} = (\text{computed pressure} - \text{true pressure}) * 100 / \text{Full Scale Range}$$

Date, Offset (%FSR)

● 10-Jan-18 0.00

